

## OUTPUT SmartPLS 3.0

Data Input SmartPLS 3.0

| Kode | Tahun | VACA (X1) | VAHU (X2) | STVA (X3) | AUE (Z) | ROA (Y) |
|------|-------|-----------|-----------|-----------|---------|---------|
| DLVA | 2022  | 0,503     | 0,372     | -1,692    | 0,956   | 0,743   |
| INAF | 2022  | 1,523     | -0,338    | 3,962     | 0,744   | -0,279  |
| KAEF | 2022  | -0,063    | -0,655    | 2,527     | 4,850   | -0,539  |
| KLBF | 2022  | 0,130     | 1,109     | 0,098     | 1,074   | 0,127   |
| PEHA | 2022  | 10,082    | 40,378    | 0,975     | 0,651   | 1,517   |
| PYFA | 2022  | 0,499     | 1,960     | 0,490     | 0,724   | 0,181   |
| SIDO | 2022  | 0,718     | 0,577     | -0,734    | 3,863   | 2,707   |
| SOHO | 2022  | 1,525     | 16,103    | 0,938     | 0,566   | 0,168   |
| TSPC | 2022  | 0,901     | 2,940     | 0,660     | 2,902   | 0,102   |
| DLVA | 2021  | 0,093     | 0,037     | -25,687   | 0,916   | 0,703   |
| INAF | 2021  | -11,849   | -1,854    | 1,539     | 1,403   | -18,675 |
| KAEF | 2021  | 0,643     | 6,677     | 0,850     | 0,729   | 0,163   |
| KLBF | 2021  | 0,127     | 1,092     | 0,084     | 1,033   | 0,126   |
| PEHA | 2021  | 12,591    | 3,910     | 0,744     | 0,057   | 0,614   |
| PYFA | 2021  | -23,975   | -249,235  | 1,004     | 0,816   | 6,796   |
| SIDO | 2021  | 0,558     | 4,824     | 0,793     | 0,118   | 0,310   |
| SOHO | 2021  | 0,964     | 6,713     | 0,851     | 0,361   | 0,567   |
| TSPC | 2021  | -134,543  | -136,200  | 1,007     | 0,423   | 0,703   |
| DLVA | 2020  | 12,533    | 5,171     | 0,807     | 0,931   | 0,816   |
| INAF | 2020  | -1,906    | -0,556    | 2,799     | 0,962   | 0,175   |
| KAEF | 2020  | -4,199    | 1,549     | 0,354     | 0,589   | 1,163   |
| KLBF | 2020  | 0,125     | 0,909     | -0,100    | 1,038   | 0,124   |
| PEHA | 2020  | 7,934     | 4,125     | 0,758     | 5,632   | 2,540   |
| PYFA | 2020  | 152,911   | 407,260   | 0,998     | 1,225   | 9,670   |
| SIDO | 2020  | 1,960     | 0,975     | -0,026    | 0,754   | 0,479   |
| SOHO | 2020  | 0,537     | 7,960     | 0,874     | 0,088   | 1,806   |
| TSPC | 2020  | 0,876     | 5,200     | 0,808     | 1,641   | 1,229   |
| DLVA | 2019  | 4,725     | 5,353     | 0,813     | 0,100   | 0,121   |
| INAF | 2019  | 1,265     | 0,496     | -1,016    | 1,003   | 5,753   |
| KAEF | 2019  | 0,000     | 0,001     | -1300,250 | 0,053   | 0,009   |
| KLBF | 2019  | 0,124     | 0,877     | -0,140    | 1,127   | 0,125   |
| PEHA | 2019  | 1,208     | 4,038     | 0,752     | 0,539   | 0,488   |
| PYFA | 2019  | 1686,092  | 3325,177  | 1,000     | 1,318   | 48,970  |
| SIDO | 2019  | 1,496     | 0,532     | -0,880    | 0,731   | 0,994   |
| SOHO | 2019  | 14,007    | 0,706     | -0,416    | 0,835   | 1,923   |
| TSPC | 2019  | 9,024     | 0,518     | -0,930    | 0,037   | 0,541   |

## OUTPUT SmartPLS 3.0

Output Uji Linieritas dengan Metode *Curve Fit* (Intellectual Capital terhadap Kinerja Keuangan)

### Model Summary and Parameter Estimates

Dependent Variable:KK

| Equation | Model Summary |        |     |     |      | Parameter Estimates |      |
|----------|---------------|--------|-----|-----|------|---------------------|------|
|          | R Square      | F      | df1 | df2 | Sig. | Constant            | b1   |
| Linear   | .264          | 19.002 | 1   | 35  | .000 | 21.907              | .071 |

The independent variable is IC.

Output Uji Linieritas dengan Metode *Curve Fit* (Intellectual Capital terhadap Competitive Advantage)

### Model Summary and Parameter Estimates

Dependent Variable:CA

| Equation | Model Summary |       |     |     |      | Parameter Estimates |      |
|----------|---------------|-------|-----|-----|------|---------------------|------|
|          | R Square      | F     | df1 | df2 | Sig. | Constant            | b1   |
| Linear   | .046          | 2.551 | 1   | 35  | .116 | 17.679              | .113 |

The independent variable is IC.

Output Uji Linieritas dengan Metode *Curve Fit* (Competitive Advantage terhadap Kinerja Keuangan)

### Model Summary and Parameter Estimates

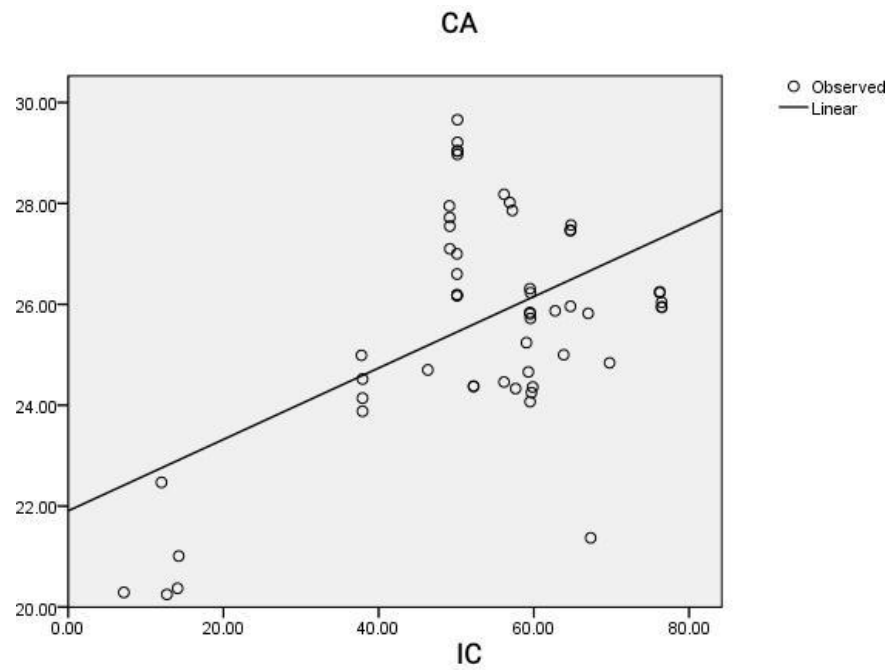
Dependent Variable:KK

| Equation | Model Summary |      |     |     |      | Parameter Estimates |       |
|----------|---------------|------|-----|-----|------|---------------------|-------|
|          | R Square      | F    | df1 | df2 | Sig. | Constant            | b1    |
| Linear   | .013          | .712 | 1   | 35  | .402 | 34.892              | -.439 |

The independent variable is CA.

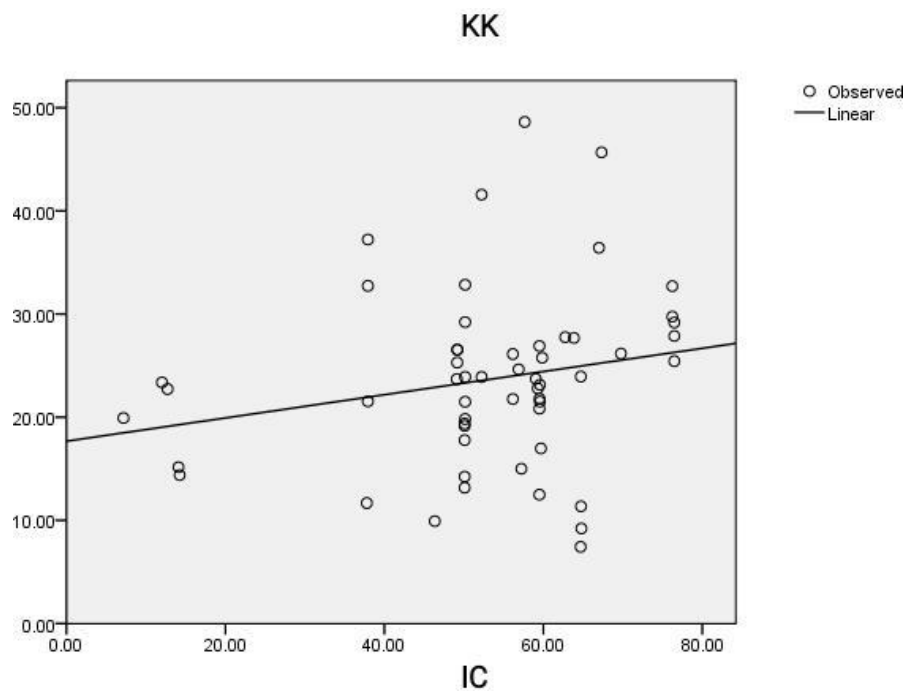
## OUTPUT SmartPLS 3.0

Kurva Linier Hubungan Intellectual Capital terhadap Competitive Advantage



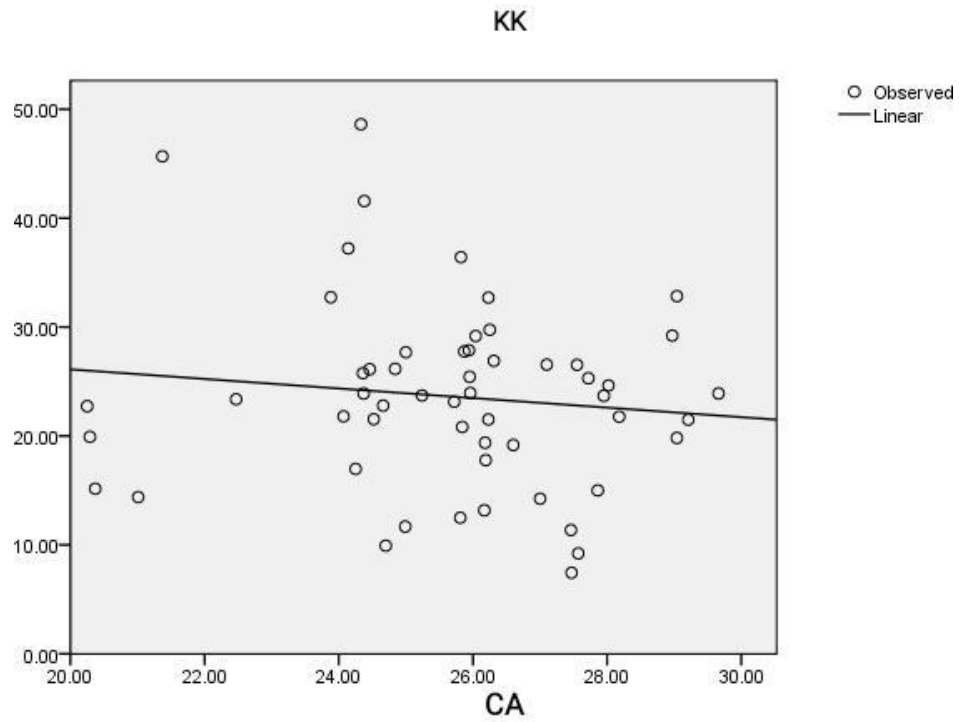
## OUTPUT SmartPLS 3.0

Kurva Linier Hubungan Intellectual Capital terhadap Kinerja Keuangan



## OUTPUT SmartPLS 3.0

Kurva Linier Hubungan Competitive Advantage terhadap  
Kinerja Keuangan



## OUTPUT SmartPLS 3.0

Output smartPLS 3.0 (*R Square*)  
 Nilai Loading Factor

|                                                         | Efek Mediasi | Kinerja Keuangan (Y) | Intellectual Capital (X) | Competitive Advantage (Z) |
|---------------------------------------------------------|--------------|----------------------|--------------------------|---------------------------|
| AUE                                                     |              |                      |                          | 1.000                     |
| ROA                                                     |              | 1.000                |                          |                           |
| Intellectual Capital (X) *<br>Competitive Advantage (Z) | 1.000        |                      |                          |                           |
| VACA                                                    |              |                      | 1.000                    |                           |
| VAHU                                                    |              |                      | 1.000                    |                           |
| STVA                                                    |              |                      | 1.000                    |                           |

Output smartPLS 3.0 (*R Square*)  
 Nilai R- Square dan Adjusted R-Square

|                      | R Square | Adjusted R Square |
|----------------------|----------|-------------------|
| Kinerja Keuangan (Y) | 0,434    | 0,753             |

Output smartPLS 3.0 (Validitas dan Reliabilitas Konstruk)  
 Nilai Average Variance Extracted (AVE)

|                           | Rata-rata Varians Diekstrak (AVE) | Keterangan |
|---------------------------|-----------------------------------|------------|
| Efek Mediasi              | 1.000                             | Valid      |
| Kinerja Keuangan (Y)      | 1.000                             | Valid      |
| Intellectual Capital (X)  | 1.000                             | Valid      |
| Competitive Advantage (Z) | 1.000                             | Valid      |

Output smartPLS 3.0  
 Nilai Cronbach's Alpha dan Composite Reliability

|                           | Cronbach's Alpha | Reliabilitas Komposit |
|---------------------------|------------------|-----------------------|
| Efek Mediasi              | 1.000            | 1.000                 |
| Kinerja Keuangan (Y)      | 1.000            | 1.000                 |
| Intellectual Capital (X)  | 1.000            | 1.000                 |
| Competitive Advantage (Z) | 1.000            | 1.000                 |

## OUTPUT SmartPLS 3.0

Output smartPLS 3.0  
Nilai Cross Loading

|                                                      | Efek Mediasi | Kinerja Keuangan (Y) | Intellectual Capital (X) | Competitive Advantage (Z) |
|------------------------------------------------------|--------------|----------------------|--------------------------|---------------------------|
| AUE                                                  | 1.000        | 0,131                | 0,581                    | 1.000                     |
| ROA                                                  | 0,131        | 1.000                | 0,591                    | 0.131                     |
| Intellectual Capital (X) * Competitive Advantage (Z) | 1.000        | 0.581                | 0,991                    | 0,591                     |
| VACA                                                 | 0,991        | 0,991                | 1.000                    | 0,991                     |
| VAHU                                                 | 0,012        | 0,012                | 1.000                    |                           |
| STVA                                                 | 1.000        | 1.000                | 1.000                    | 1.000                     |

Output smartPLS 3.0 (Korelasi Variabel Laten  
Perbandingan Nilai Akar AVE Dengan Korelasi antara Konstruk Lain

|                           | Efek Mediasi | Kinerja Keuangan (Y) | Intellectual Capital (X) | Competitive Advantage (Z) |
|---------------------------|--------------|----------------------|--------------------------|---------------------------|
| Efek Mediasi              | 1.000        |                      |                          |                           |
| Kinerja Keuangan (Y)      | 0.131        | 1.000                |                          |                           |
| Intellectual Capital (X)  | 0,591        | 0,581                | 1.000                    |                           |
| Competitive Advantage (Z) | 1.000        | 0,131                | 0,591                    | 1.000                     |

Output smartPLS 3.0 (Koefisien Jalur)  
Hasil Analisis Path Coefficient

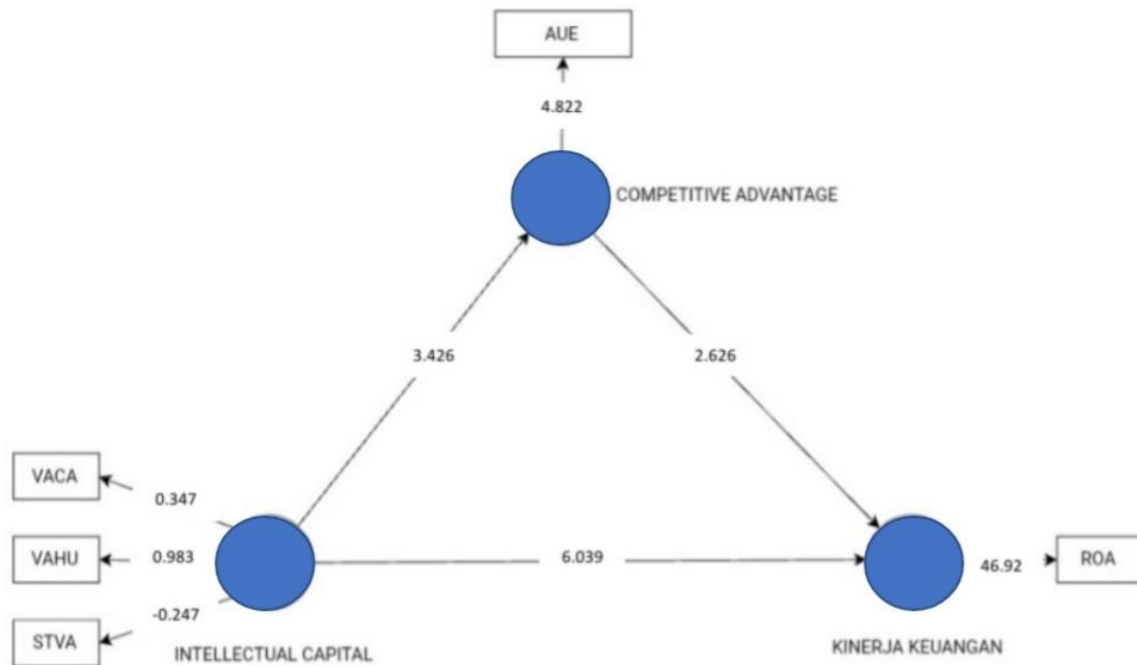
|                                                       | Sampel Asli (O) | Standar Deviasi (STDEV) | T Statistik ( O/STDEV ) | P Values |
|-------------------------------------------------------|-----------------|-------------------------|-------------------------|----------|
| Efek Mediasi -> Kinerja Keuangan (Y)                  | 0.591           | 0,188                   | 3.145                   | 0.002    |
| Intellectual Capital (X) -> Kinerja Keuangan (Y)      | 0,773           | 0,131                   | 5.894                   | 0.044    |
| Intellectual Capital (X) -> Competitive Advantage (Z) | 0,991           | 0,012                   | 2.416                   | 0.001    |
| Competitive Advantage (Z) -> Kinerja Keuangan (Y)     | -0.325          | 0,129                   | 2.517                   | 0.012    |

Output smartPLS 3.0  
Hasil Analisis Moderated Regression Analysis (MRA)

|                                      | Sampel Asli (O) | Standar Deviasi (STDEV) | T Statistik ( O/STDEV ) | P Values |
|--------------------------------------|-----------------|-------------------------|-------------------------|----------|
| Efek Mediasi -> Kinerja Keuangan (Y) | 0.591           | 0,188                   | 3.145                   | 0.002    |

## OUTPUT SmartPLS 3.0

Output smartPLS 3.0 (Model Pengukuran)

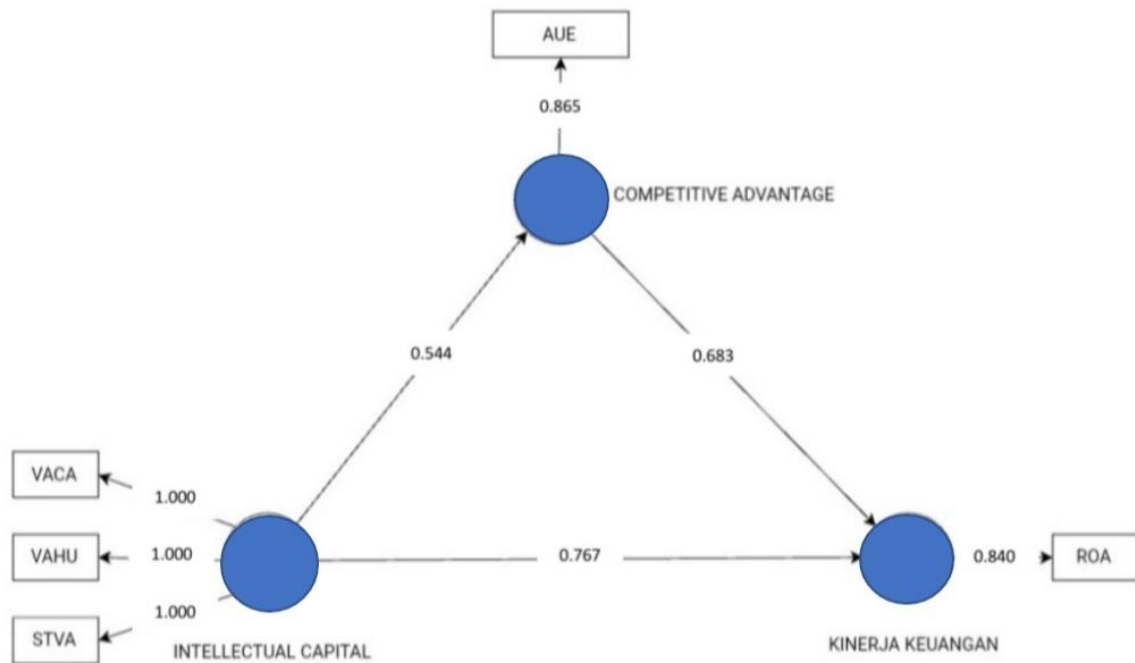


Output smartPLS 3.0 (Model Pengukuran Tahap Fit)

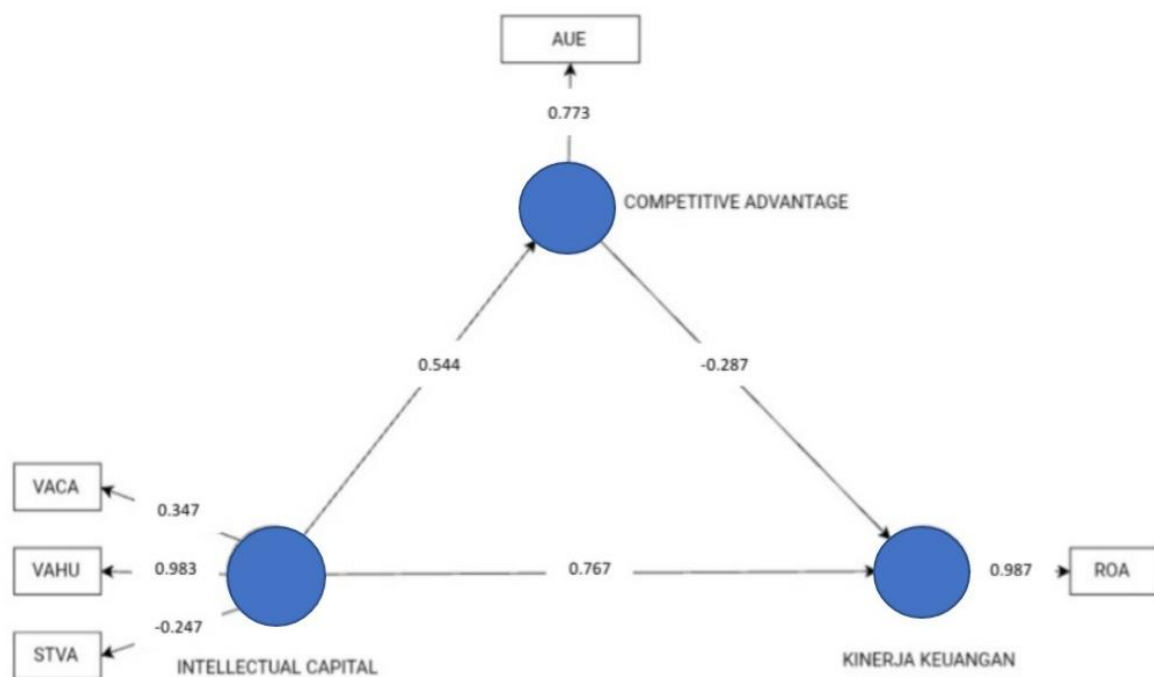




## OUTPUT SmartPLS 3.0



## Output smartPLS 3.0 (Hasil Analisis Bootstrapping)



## OUTPUT SmartPLS 3.0